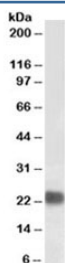


HP1 Antibody / HP1A [Biotin Conjugate] (R34848BTN)

Catalog No.	Formulation	Size
R34848BTN	0.5 mg/ml in 1X TBS, pH7.3, with 0.5% BSA (US sourced) and 0.02% sodium azide	100 ug

[Bulk quote request](#)

Availability	1-3 business days
Species Reactivity	Human
Predicted Reactivity	Dog, Mouse
Format	Biotin Conjugate
Clonality	Polyclonal (goat origin)
Isotype	Goat Ig
Purity	Antigen affinity
Gene ID	23468
Applications	Western Blot : 0.1-0.3ug/ml Immunohistochemistry (FFPE) : suitable ELISA (peptide) LOD : 1:128000
Limitations	This HP1 antibody is available for research use only.



Western blot testing of HeLa lysate with biotinylated HP1 antibody at 0.1ug/ml. Predicted molecular weight ~22kDa. An NAP blocker was used in place of non-fat milk as blocking solution and diluent. (1)

Description

Additional name(s) for this target protein: Heterochromatin protein 1 alpha, HP1 alpha; CBX5

Application Notes

Optimal dilution of the HP1 antibody should be determined by the researcher.

1. Do not use a blocking agent or diluent that contains biotin (including milk and some BSA preparations) when testing with biotinylated antibodies. A non-animal protein (NAP) blocker is recommended.

Immunogen

Amino acids NKRKSNFSNSADDIK were used as the immunogen for this HP1 antibody.

Storage

Aliquot and store the HP1 antibody at -20oC.